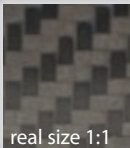


≡ MANSORY ≡



**Carbon fibre fine - standard**

On request is possible produce carbon parts with another structure from our collection - [mansory.com/carbon](https://mansory.com/carbon)

real size 1:1

**OVERVIEW 2019**

last update 12 / 2019

The customization programme  
for **Rolls Royce Cullinan**



**MANSORY WIDE BODY KIT ( car without towbar )**

RRC 4W0 001

**MANSORY WIDE BODY KIT ( car with towbar )**

RRC 4W0 T01

**Front bumper:**

- front lip - visible carbon fibre primed without clear coat
- set of glitter for front bumper - black
- LED day time running lights

**Body extension - 16 parts**

- side skirts lip - visible carbon fibre primed without clear coat
- fenders extensions

**Rear bumper:**

- diffuser visible carbon fibre primed without clear coat
- Chrome or Black chrome exhaust blinds ( *Please specify your choice in your order* )





**Front fenders**

2 parts set - left & right  
2 parts set of emblem with MANSORY logo

RRC 130 002



**Bar for engine bonnet**

visible carbon fibre glossy\*

RRC 210 011



**Engine bonnet with bar exposed**

visible carbon fibre primed without clear coat

**Engine bonnet with bar**

not visible carbon fibre primed

RRC 210 001

RRC 210 002



**Front grill frame - exposed**

visible carbon fibre primed without clear coat

RRC 210 021





**Roof spoiler - exposed**..... RRC 630 771  
visible carbon fibre glossy\*



**Rear decklid spoiler - exposed**..... RRC 830 841  
visible carbon fibre glossy\*



**Rear bumper protective bar**..... RRC 802 714  
visible carbon fibre glossy\*



**Engine cover**  
with MANSORY logo

RRC 240 741



**Sport Exhaust System for Wide Body**

RRC 221 019

**Sport Exhaust System for OEM**

RRC 221 119

Connection Pipes & Muffler



**MANSORY Lowering Suspension for Rolls Royce Cullinan**

RRC 900 101

2 level adjusting rods front axle, 2 level adjusting rods rear axle  
Lowering of approx 20-30 mm

## MANSORY Lowering Suspension

consisting of:

- 2 level adjusting rods front axle
- 2 level adjusting rods rear axle

Lowering of approx 20-30 mm

With the MANSORY Lowering Suspension you have the optimal symbiosis of excellent ride comfort during normal driving and agile direct response during fast cornering.

The product described in the instructions has been developed, and manufactured under consideration of the necessary safety regulations, and is subject to quality checks. To guarantee flawless, safe function and to eliminate any risk to people or property, this product must be installed properly. Therefore installation should only be carried out by trained specialists, with the specific technical and specialist knowledge required for installation in a vehicle, and the necessary tools. For this, you must carefully read and understand the fitting instructions.



**Sport steering wheel**  
with MANSORY logo

- leather/carbon ..... RRC 351 441
- leather/wood ..... RRC 351 445
- leather/piano lacquer ..... RRC 351 446
- leather/leather ..... RRC 351 444

**(C)** modification only, OE-part required



**Airbag cover** ..... RRC 351 500

available with leather,  
alcantara, carbon, wood

**(C)** modification only, OE-part required



**MANSORY Individualized Interior Kit** ..... RRC 300 000

Complete refined interior,  
by exclusive leather sorts, combination on customers request.



**Entrance panels with illuminated MANSORY logo** ..... RRC 395 351

**Entrance panels with MANSORY logo** ..... RRC 395 353

4 parts set  
visible carbon fibre primed without clear coat  
**not compatible with EWB ( long )**





**Interior trims** RRC 300 001  
 set instrument panels, cockpit & front middle console tunnel covers. available with carbon and wood  
 ⚠ modification only, OE-part required



**Sport pedals** RRC 367 127  
 3 parts, acceleration, brake, foot rest



**Headliner** RRC 390 000  
 ⚠ modification only, OE-part required



**Floor mats** RRC 367 758  
 4 parts, front/ rear, left/ right with logo stitch



**Trunk mat** RRC 368 758  
 with logo stitch



**Trunk house decor** RRC 368 500  
 Complete refined trunk compartment, by exclusive leather sorts, combination on customers request.



**FS.23 24" fully forged wheel** ..... **FS23 24 10 20 1230 B**  
**Black Diamond**

1pcs., 10x24, ET20, 5/112 + 5/130

FA: 10x24 ET20  
 RA: 10x24 ET20 + 10mm spacer

- \* price per piece
- \* without tire
- \* without spacers

✂ **Tires**  
 recommended tyre size  
 Front: 295/30/24  
 Rear: 295/30/24

**Y.8 wheel 24" fully forged wheel** ..... **Y8 24 10 25 112 B**  
**Diamond black**

1pc., 10x24, ET25, 5x112 with wheel cap  
 FA: 10x24 ET25  
 RA: 10x24 ET25 + 15mm spacer

- \* price per piece
- \* without tire
- \* without spacers

**Y.8 wheel 22" - silver polished** ..... **Y8 22 10 40 120 SP**

1pc., 10x22, OS40,  
 with chrome/ silver wheel cap  
 \* price per piece / \* without tire

✂ Recommended tyre size:  
 Front: 265/35/22 - Rear: 295/30/22



**Spacer adapter kit** ..... **RRC SM8 22**  
**for 22 inch Y.8**

20 10mm / RA 35 mm, 4 parts set

**V.6 wheel 24" fully forged** ..... **V6 24 10 25 112 B**  
**Diamond black**

1pc., 10x24, ET25, 5x112 with wheel cap  
 FA: 10x24 ET25  
 RA 10x24 ET25 + 15mm spacer

- \* price per piece
- \* without tire
- \* without spacers

**V.6 wheel ( Diamond black )** ..... **V6 22 10 43 1220 B**

1pc., 10 x 22, ET43,  
**V.6 wheel ( Black glossy )** ..... **V6 22 10 43 1220 BG**  
 1pc., 10 x 22, ET43,  
 with chrome/ silver wheel cap  
 FA: 10x22 ET43 + 20mm spacer  
 RA 10x22 ET43 + 30mm spacer

- \* price per piece
- \* without tire
- \* without spacers

✂ recommended tyre size  
 Front: 285/40/22 Rear: 285/40/22

\*matte coating on request page 7





**N.80 23 inch (Diamond black)** N80 23 105 45 112 B  
**N.80 23 inch (Diamond anthracite)** N80 23 105 45 112 A  
 FA: 10.5x23 ET 45 + 20mm spacer

**N.80 23 inch (Diamond black)** N80 23 105 35 112 B  
**N.80 23 inch (Diamond anthracite)** N80 23 105 35 112 A  
 RA: 10.5x23 ET 35 + 20mm spacer

\* price per piece  
 \* without tire  
 \*without spacer

✂recommended tyre size  
 295/35 SportContact™ 6 - Continental

**CS.5 22 inch (Diamond silver)** CS5 22 95 35 112 S  
**CS.5 22 inch (Diamond anthracite)** CS5 22 95 35 112 A  
**CS.5 22 inch (Diamond black)** CS5 22 95 35 112 B  
 FA: 1pc., 9,5x22 OS35 + 15mm spacer

**CS.5 22 inch (Diamond silver)** CS5 22 105 35 112 S  
**CS.5 22 inch (Diamond anthracite)** CS5 22 105 35 112 A  
**CS.5 22 inch (Diamond black)** CS5 22 105 35 112 B  
 RA: 1pc., 10,5x22 OS35 + 20mm spacer

\* price per piece  
 \* without tire  
 \*without spacer

✂recommended tyre size  
 Front: 255/45/22 Rear: 285/40/22

**CS.11 22 inch (Diamond black)** CS11 22 9 30 1230 B  
 FA: 1pc., 9x22 OS30 + 20mm spacer  
**CS.11 22 inch (Black glossy)** CS11 22 9 30 1230 BG  
 FA: 1pc., 9x22 OS30 + 20mm spacer

**CS.11 22 inch (Diamond black)** CS11 22 105 42 1230 B  
 RA: 1pc., 10,5x22 OS42 + 25mm spacer  
**CS.11 22 inch (Black glossy)** CS11 22 105 42 1230 BG  
 RA: 1pc., 10,5x22 OS42 + 25mm spacer

\* price per piece  
 \* without tire  
 \*without spacer

✂recommended tyre size  
 Front: 255/45/22 Rear: 285/40/22